



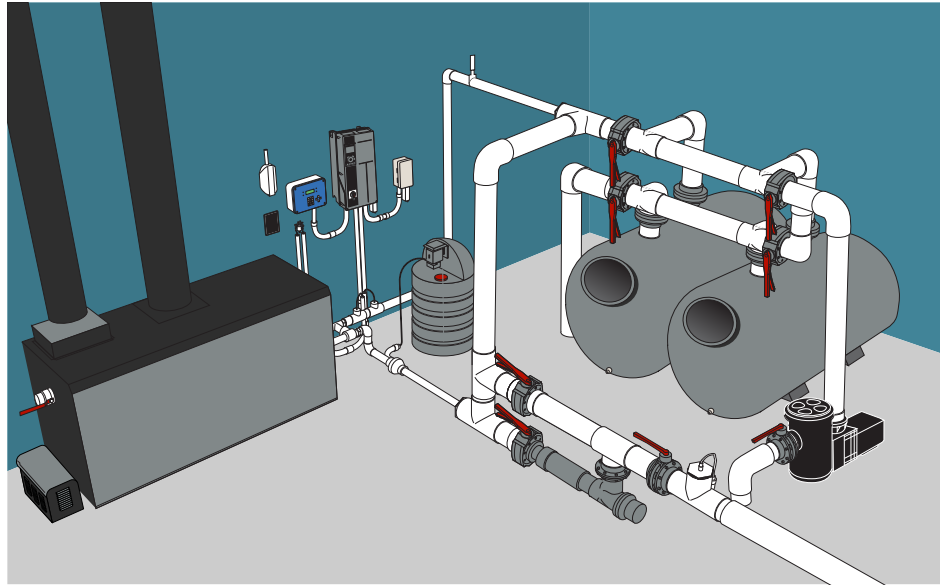
PENTAIR COMMERCIAL AQUATICS

INTEGRATION
BY DESIGN



LARGE MECHANICAL ROOM

COMPLETE SYSTEM SOLUTIONS



1. EQ SERIES® PUMPS
Now with TEFC motors provide high performance efficiency.



2. THS SERIES® AND STARK® FILTERS
Provide maximum filtration in proven technology.



3. ACU DRIVE™ XS VFD
Optimize performance for your Commercial pumps.



4. ACU-TROL® AND INTELLICHEM® CHEMICAL CONTROLLERS
Provide proper chemical management.



5. BIOSHIELD® UV SANITIZERS
Provide excellent secondary sanitizing system.



6. FILTER MANIFOLD KITS
Feature clear automatic diaphragm or butterfly valves.



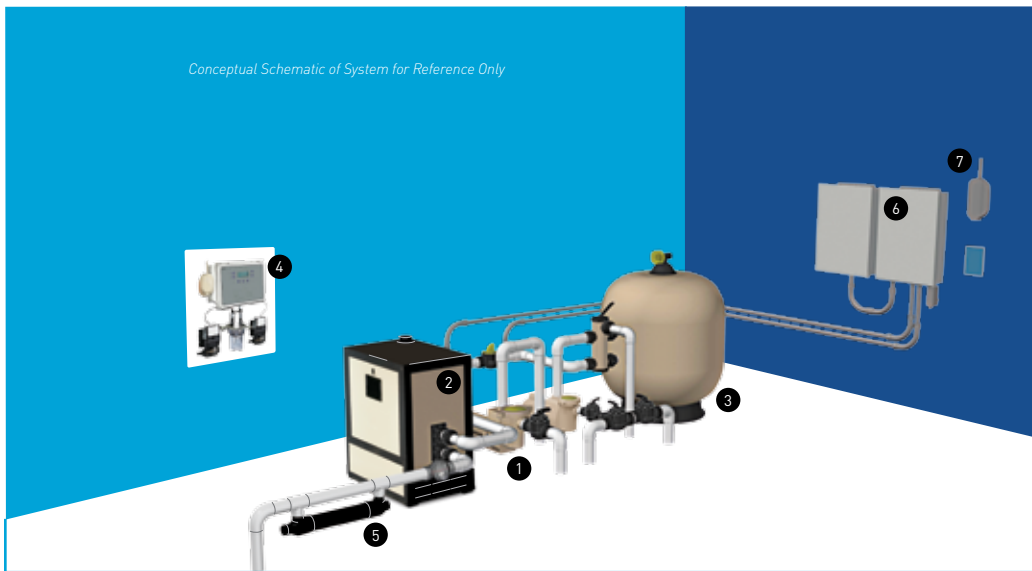
7. INTELLIBRITE® WHITE 5G LED LIGHTING
Creates energy savings and efficient lighting for large pools.



8. POWERMAX® HEATERS
PowerMax heater provides peak efficiency in both indoor and outdoor applications to 2,000,000 BTU's.

SMALL MECHANICAL ROOM

COMPLETE SYSTEM SOLUTIONS



1. WHISPERFLOXF® & INTELLIFLO® VS+SVRS PUMPS
Energy savings up to 90% versus traditional pumps.*



6. INTELLITOUCH® & EASYTOUCH® AUTOMATION SYSTEMS
Superior programming and control of vital pool systems and accessories.



2. MASTERTEMP® & ETI® 400 HEATERS
Best in class up to 96% Efficient.



7. SCREENLOGIC® INTERFACE
Monitor and control key elements of a pool or spa directly from a mobile digital device and/or computer.



3. TRITON® C SERIES SAND FILTER
High efficiency and easy maintenance in high capacity applications.



INTELLIBRITE® 5G UNDERWATER LIGHTS
White LED lights create vibrant pool or spa environments with high energy efficiency. Color-changing models also available.



4. INTELLICHEM® CHEMICAL CONTROLLER & ACU-TROL® AK110™ TITLE 22 READY CHEMICAL AUTOMATION CONTROLLER
24-hour control of water chemistry.



COMMERCIAL INTELLICHLOR® & RAINBOW™ HIGH CAPACITY FEEDERS
Secondary sanitizer systems available for commercial settings where additional sanitization methods are required.



5. BIOSHIELD® COMMERCIAL UV DISINFECTION SYSTEMS CLP & CVP SYSTEMS
Provide instant protection against Cryptosporidium, giardia, chloramines while saving chlorine usage.



* Savings based on variable speed pump compared to a single-speed pump running 12 hours per day at an average of \$0.16 per kWh in a 20,000 gallon pool. Actual savings may vary based on local utility rates, pool size, pump run time, pump horsepower, pump rpm, plumbing size and length, pump model, service factor and other hydraulic factors. All systems equipped with automated Emergency Shutoff switch (ESO).