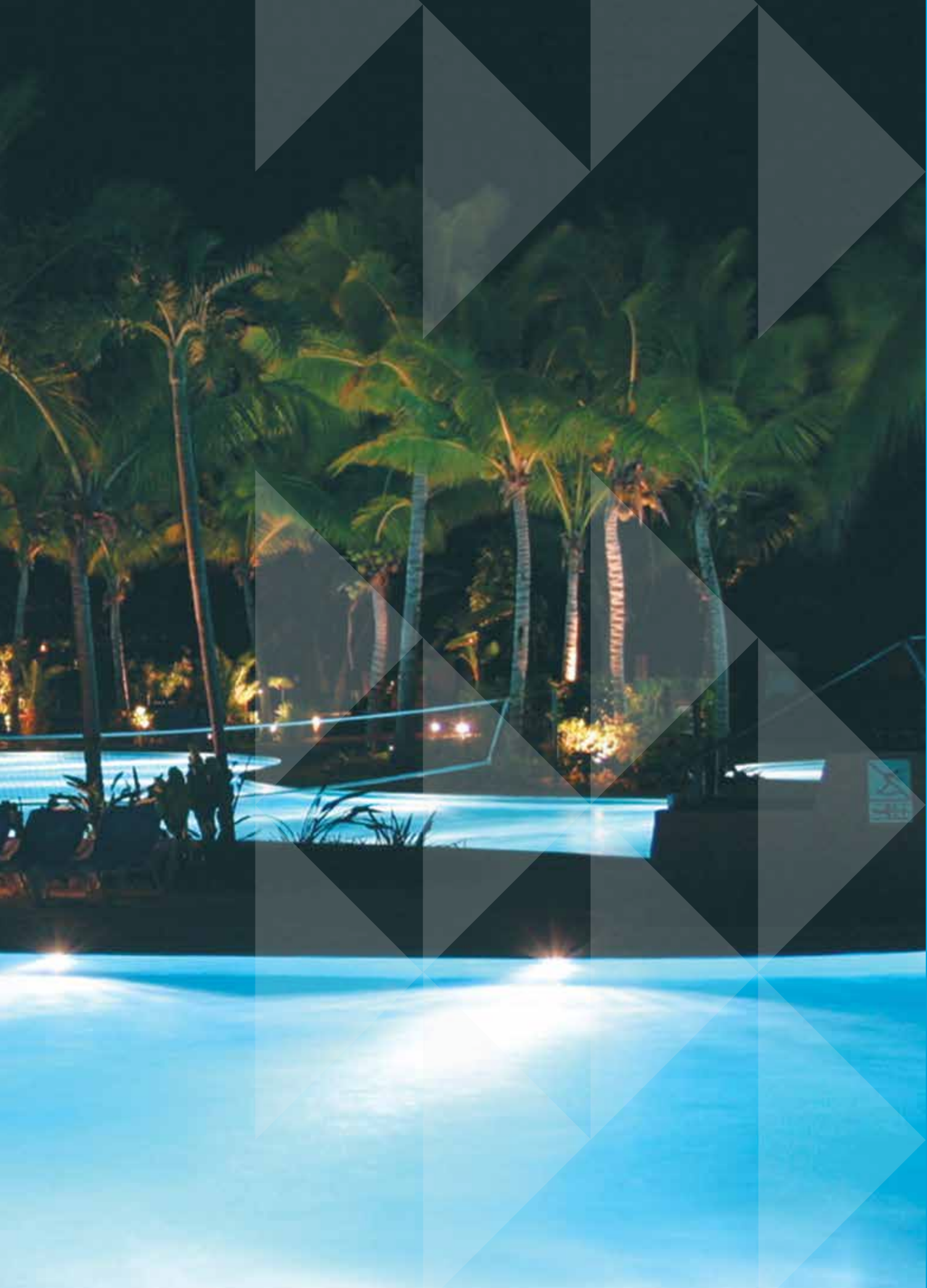




**PENTAIR** COMMERCIAL AQUATICS

---

VALVES



# DIVERTER AND CHECK VALVES – 1-1/2 IN. AND 2 IN.

## 2-WAY, 3-WAY AND CHECK

263027



263026



263042



### Featured Highlights

- All valves available in CPVC or PVC
- Maintenance-free PTFE coated diverter seal
- Optimum positive-seal
- High Flow Rate
- Fiberglass reinforced handle
- Withstands pressure up to 150 psi
- Chemical-resistant
- Used for diverting, shut-off or mixing applications
- Accepts 1-1/2 in., 2 in., and 2-1/2 in. PVC plumbing
- Field-adjustable stop positions
- Plumbed with inlet at any port
- Designed to work with most industry standard actuators

### Ordering Information

Product	Description	Carton Qty.	Carton Wt. (Lbs.)
<b>2-WAY AND 3-WAY DIVERTER VALVES</b>			
263026	3-Way CPVC 2 in. (2-1/2 in. slip outside)	1	2
263027	2-Way CPVC 2 in. (2-1/2 in. slip outside)	1	2
263028	3-Way PVC 2 in. (2-1/2 in. slip outside)	1	2
263029	2-Way PVC 2 in. (2-1/2 in. slip outside)	1	2
263035	3-Way CPVC 1-1/2 in. (2 in. slip outside)	1	2
263036	2-Way CPVC 1-1/2 in. (2 in. slip outside)	1	2
263037	3-Way PVC 1-1/2 in. (2 in. slip outside)	1	2
263038	2-Way PVC 1-1/2 in. (2 in. slip outside)	1	2
263047	3-Way Solar Valve w/ drain-down, CPVC 2 in. (2-1/2 in. slip outside)	1	2
<b>CHECK VALVES</b>			
263042	Check Valve CPVC 2 in. (straight 2-1/2 in. slip outside)	1	2
263042Z	Check Valve Rebuild Kit		



263027



263029



263026



263028

PVC Valves not recommended for climates that can reach air temperatures of over 104°F.

# FULLFLOXF<sup>®</sup> DIVERTER & CHECK VALVES 2-1/2 IN. & 3 IN.

## 2-WAY, 3-WAY AND CHECK

### Featured Highlights

- Valves available in CPVC for maximum heat resistance
- Maintenance-free PTFE coated diverter seal
- Optimum positive-seal
- Maximum Flow Rate, low head loss
- Chemical-resistant
- Used for diverting, shut-off or mixing applications
- Accepts 2-1/2 in. and 3 in. PVC plumbing
- Field-adjustable stop positions
- Plumbed with inlet at any port
- Designed to work with most industry standard actuators



263059



263060



263068



263056/263057



263077

### Ordering Information

Product	Description	Carton Qty	Carton Wt (Lbs)
<b>2-WAY AND 3-WAY DIVERTER VALVES</b>			
263056	3-Way CPVC 2.5 in. (3 in. slip outside)	1	
263057	3-Way Solar Valve w/ drain-down, CPVC 2.5 in. (3 in. slip outside)	1	
263059	2-Way CPVC 2.5 in. (3 in. slip outside)	1	
263068	90 degree 2-way CPVC 2.5 in. (3 in. slip outside)	1	
<b>2-WAY AND 90 DEGREE CHECK VALVES</b>			
263060	Check Valve CPVC 2.5 in. (3 in. slip outside)	1	
263077	90 degree Check Valve CPVC 2.5 in. (3 in. slip outside)	1	
270119Z	Check Valve Rebuild Kit		



# PRE-PLUMBED VALVES

## BACKWASH VALVES FOR 1-1/2 & 2 IN. D.E. AND SAND FILTERS

Side mounted HiFlow™ and Multiport Valves are designed for maximum performance and working pressures. Available in 1-1/2 and 2 in. threaded or slip models.

### Featured Highlights

- PVC body
- The right valve for easy operation
- Six-position, positive-lock operation
- Special winterizing position

### Ordering Information

Product	Description	Carton Qty.	Carton Wt. (Lbs.)
<b>MULTIPOINT VALVE KIT FOR FILTERS, SLIP</b>			
261055	2 in. MPV, for Triton & Quad D.E. filters [SM 20-3] 7-1/2 in. Centerline	1	9
261152	2 in. MPV, for FNS, FNS Plus & NSP filters [SM 20-2] 7-1/2 in. Centerline	1	9
261173	1-1/2 in. MPV, for Triton & Quad D.E. filters [SM 10-3] 7-1/2 in. Centerline	1	8
261177	1-1/2 in. MPV, for FNS, FNS Plus & NSP filters [SM 10-2] 7-1/2 in. Centerline	1	8
<b>HIFLOW VALVE KIT FOR FILTERS, SLIP</b>			
261050	2 in., w/ bulkhead fittings, for Triton & Quad D.E. filters, 7-1/2 in. Centerline	1	9
261142	2 in., w/ bulkhead fittings, for FNS, FNS Plus & NSP filters, 7-1/2 in. Centerline	1	9
<b>PVC SLIDE VALVE, SLIP</b>			
263064	Push Pull Valve, 7-1/2 in. Center, PVC, Almond	1	4.5
263079	2 in. w/o bulkhead fittings for D.E. and sand filters, 7-1/2 in. Centerline	1	
<b>FULLFLOXF BACKWASH VALVES</b>			
262507	Sta-Rite version for System 3 Mod D.E., inlet on top, with Sta-Rite offset adapters glued on		
262508	Sta-Rite version for System 3 D.E. and Sand, inlet on bottom, with Sta-Rite offset adapters glued on		
262509	Valve with filter inlet port on top, no fittings, only valve		
262511	Valve with filter inlet port on bottom, no fittings, only valve		
263080	Valve for Sand and Quad D.E., inlet port on top, Pentair 2 in. unions glued on		
263081	Valve for D.E., inlet port on bottom, Pentair 2 in. unions glued on		



HiFlow Valve Kit  
261050



PVC Slide Valve Kit  
263064



Multiport Valve Kit  
261055



eco select™ FullFloXF™  
Backwash  
Valve Kit  
263080

## PRE-PLUMBED VALVES

### BACKWASH VALVES FOR D.E. AND HIGH-RATE 8 IN. CENTERLINE SAND FILTERS

#### Featured Highlights

- 60 GPM (1-1/2 in. side mount)
- 125 GPM (2 in. side mount)
- Site glass included (MPVs)
- Brass reinforced piston (PPVs)
- 100% factory tested

Pre-plumbed Push Pull and Multiport Valves are complete with bulkhead unions for simple installations with filters. The 1-1/2 in. Side Mount Multiport Valves are rated at 100 GPM to accommodate most installations. The 2 in. Side-Mount MPV is rated at 125 GPM. Push Pull valves are 2 in. socket. All valves are 100% factory tested.



263052      50181212

Pre-plumbed Valves

#### Ordering Information

Product	Description	Carton Qty.	Carton Wt. (Lbs.)
SIDE MOUNT MULTIPORT VALVE WITH PLUMBING KIT			
50181212	1-1/2 in. Threaded Valve Kit for DE Filters	1	6
50181312	2 in. Threaded Valve Kit for DE filters	1	10
ABS PUSH PULL VALVES FOR SAND AND D.E.			
263052	Push Pull Valve, 8 in. Center	1	3

Note: For 8 in. centerline filters only.

These valves work on Eclipse™ Sand Filters and on original American Products filters manufactured before Nov. 1, 1988.

## HIFLOW™ VALVE

### BACKWASH VALVE FOR SIDE MOUNTED SAND & D.E. FILTERS

#### Featured Highlights

- PVC body
- Large, one-piece handle for trouble-free operation
- Six-position, positive-lock operation
- Noryl heavy-duty diverter
- 2 in. ports for unrestricted flow
- Specific Valves for D.E. and sand applications
- Special winterizing position

The side mounted HiFlow valve is designed for maximum performance and working pressures. Available in 2 in. slip models.



HiFlow  
Valve  
261049



#### Ordering Information

Product	Description	Carton Qty.	Carton Wt. (Lbs.)
HIFLOW VALVE			
261049	2 in. HiFlow Valve, no plumbing	1	6.4

# SLIDE VALVES

## ABS SLIDE VALVES/MULTIPOINT VALVES (SIDE MOUNT)



### Featured Highlights

Six-position dial-type valves offer convenience, ease of use and efficient operation. Includes connecting pipe to match side ports in sand and D.E. filters. 2 in. PVC unions for filter-to-valve connection. Positive seal prevents leakage between ports.



18201-0110

### Featured Highlights

Two-position backwash valves have minimal flow restriction. Innovative handle design allows easier operation; pin locks valve in filter position. Connects directly to side ports in D.E. or sand filters with 2 in. PVC unions.



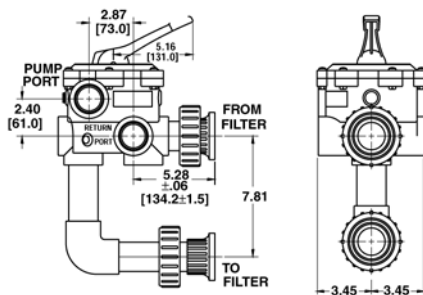
263053

## Ordering Information

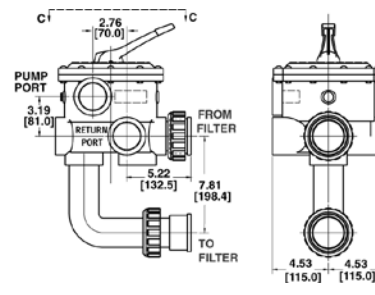
Product	Description	Valve Port Size	Carton Wt. (Lbs.)
SLIDE VALVES - UNION CONNECTION DESIGN			
263053	Push Pull Valve, 7.81 in. Center	2 in.	4
SLIDE VALVES - HOSE CONNECTION DESIGN <sup>1</sup>			
263078	Slide Valves, 2 position, Plastic	2 in.	4
MULTIPOINT VALVES - UNION CONNECTION DESIGN			
18201-0300	ABS 6-Position Valve (for System 3 Mod DE)	2 in.	8
18202-0250	ABS 6-Position Valves with piping	1-1/2 in.	5
18202-0150	ABS 6-Position Valves with 1-1/2 in. piping	1-1/2 in.	5
18201-0200	ABS 6-Position Valves with piping	2 in.	8
MULTIPOINT VALVES - UNION CONNECTION DESIGN <sup>1</sup>			
18202-0150H	ABS 6-Position Valves (hoses not included)	1-1/2 in.	5
18201-0200H	ABS 6-Position Valves (hoses not included)	2 in.	8
ACCESSORIES - HOSE CONNECTOR KITS - VALVE TO FILTER			
24750-0331	1-1/2 in. x 1-1/2 in. Connector		2
24750-0624	1-1/2 in. x 2 in. Connector		2
24750-0341	2 in. x 2 in. Connector		2

<sup>1</sup> Replacement Valves for Old Design Filters.

## Dimensions and Performance



1-1/2 in. Multiport Valve  
18201-0110



2 in. Multiport Valve  
18201-0300



